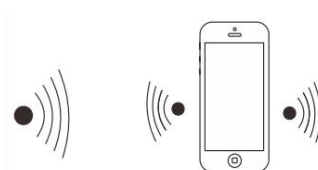




Doordeer



IP Touch Monitor

USER MANUAL

Quick Start Guide

Step 1: Plug in power adapter to IP monitor;

Step 2: Power on, wait for 1 min, IP monitor will be on standby mode.

(Attentions: Please add IP outdoor device on "Doordeer" APP firstly!)

How to connect the IP monitor?

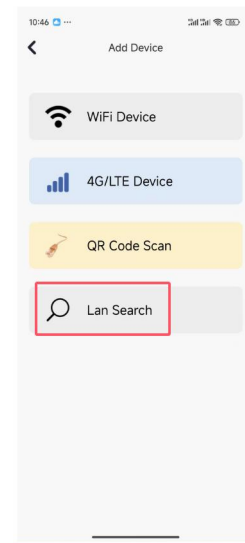
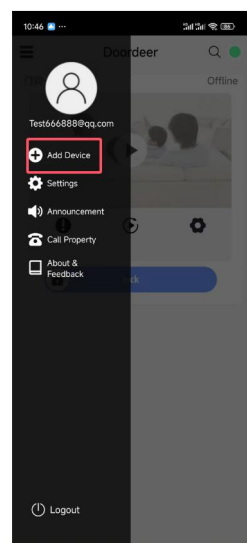
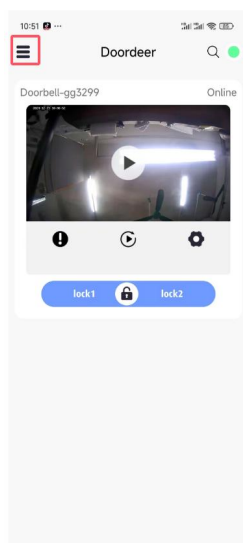
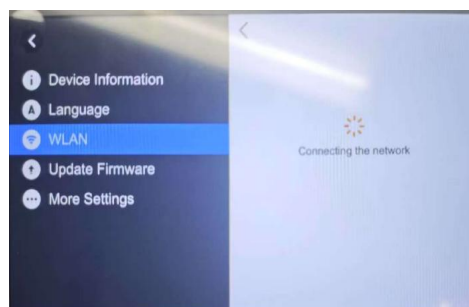
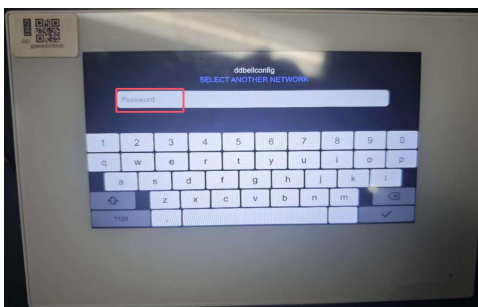
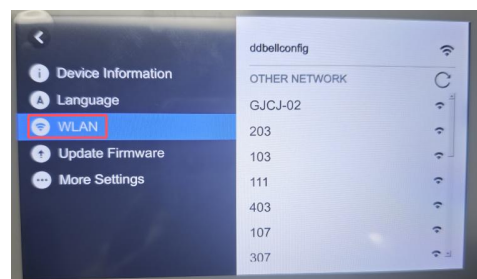
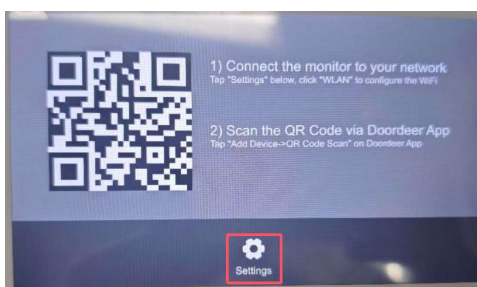
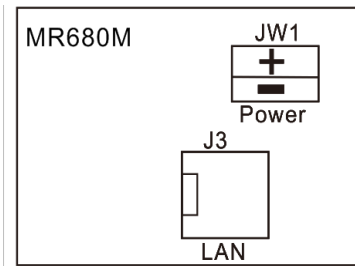
There are two ways for connection.

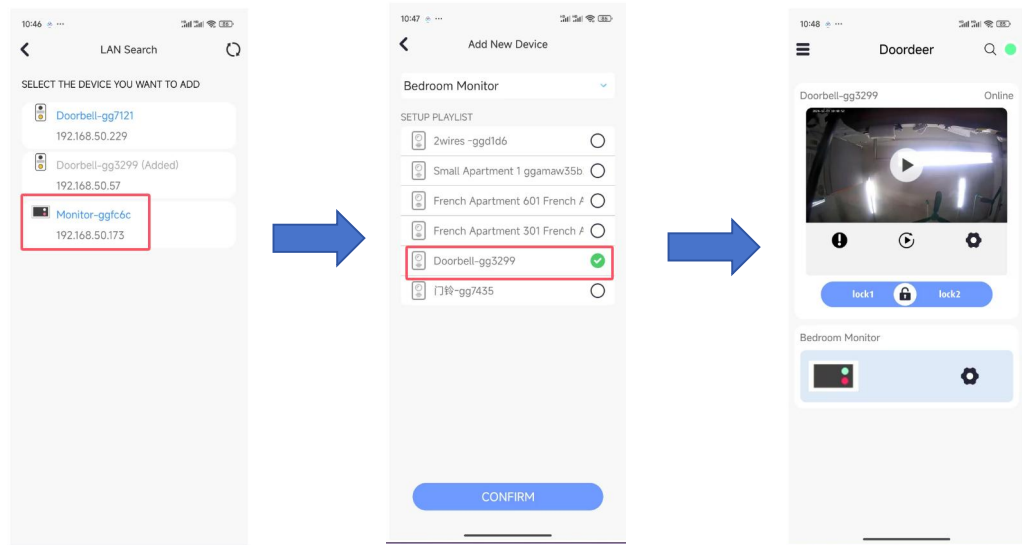
A-1. WI-FI Connection

B. RJ45 Ethernet cable connection.

A-1. WI-FI Connection

Diagram:





B. RJ45 Ethernet cable connection

Notes: Plug in **RJ45 Ethernet cable** to IP monitor,
make sure your ethernet cable works well with your network router or hub.

